

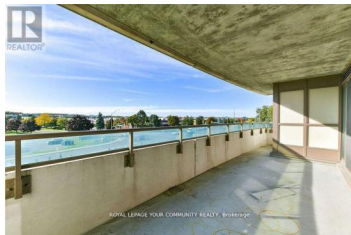
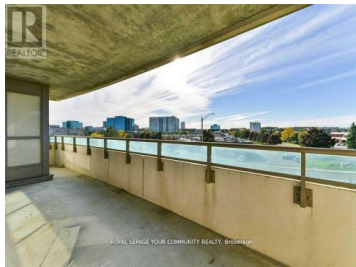
75 Norman Bethune Avenue 317 Richmond Hill Beaver Creek Business Park Ontario

Beaver Creek Business Park

\$789,900



Four season garden Luxury Condominium In Prime Richmond Hill East Beaver creek & Highway 7, Extra Large & Bright South West Corner Unit (1,304Sf) With 3 Bedrooms, 2 Washrooms and 2 Large Terraces, Each bedroom with access to the large balconies as wlel as the Kitchen, Lots Of Windows, 2 Doors Walkout To Terrace. The Largest Unit In The Building! Open concept living, Kitchen countertop. Short Walk To Shopping, Restaurants & Entertainment District, Close To Hwy 7, 404 & 407 & All Other Amenities. 2 Parking And 1 Locker included. The unit is being sold under Power of Sale (id:6769)

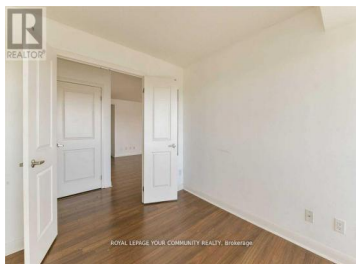
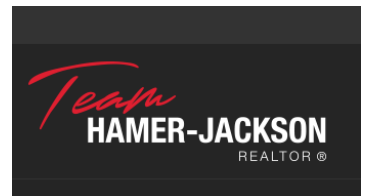


ARASH FATEMI

ROYAL LEPAGE YOUR COMMUNITY REALTY

Phone: (905) 832-6656

<http://land-investmentgroup.ca/>



RE/MAX Kelowna
100-1553 Harvey Avenue
Kelowna, BC,
Canada