



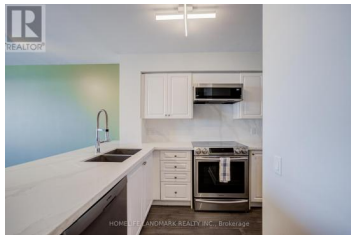
## 9017 Leslie Street 317 Richmond Hill Beaver Creek Business Park Ontario

Beaver Creek Business Park

# \$459,800



HOMELIFE LANDMARK REALTY INC., Brokerage

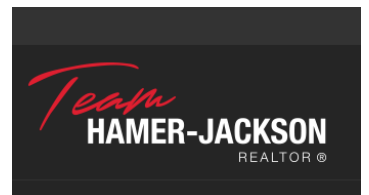


Experience modern urban living at its finest in this beautiful, open-concept one-bedroom condominium perfectly situated at the prime intersection of Leslie and Highway 7. This sun-drenched suite has been professionally painted and updated and meticulously maintained, featuring a state-of-the-art spacious bedroom that offers a true sanctuary from the city bustle. Location is everything, and this home delivers with unbeatable highway access and a vibrant neighborhood filled with premium shopping and dining. Your lifestyle reaches new heights with exclusive access to the Sheraton Parkway Athletics Club, boasting world-class, spa-like amenities including: Professional Fitness Center & Gym Refreshing Swimming Pool Relaxing Spa Facilities Complete with one dedicated parking space, this residence combines convenience, luxury, and comfort in one sophisticated package. Don't miss your chance to call this pristine condo home (id:6769)

**KAM HEMATI**

HOMELIFE LANDMARK REALTY INC.

Phone: (905) 305-1600



RE/MAX Kelowna  
100-1553 Harvey Avenue  
Kelowna, BC,  
Canada