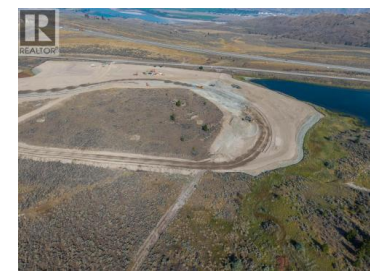
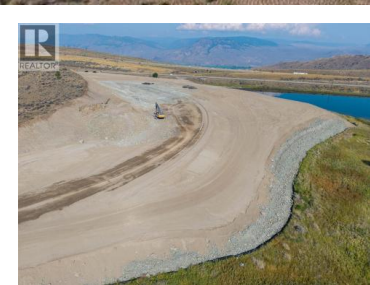




3175 Sugarloaf Road Other Kamloops British Columbia

Knutsford-Lac Le Jeune

\$4,837,500



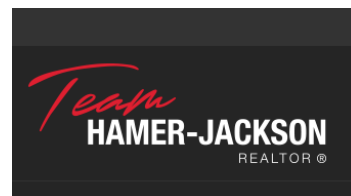
Iron Mask Industrial Park ("IMIP") a 190-acre light industrial parcel of land, is set to add to Kamloops' reputation as a thriving hub for diverse, light industrial businesses. The freehold land, strategically located near major transportation networks, will help address the significant shortage of light industrial land available in Kamloops. Proposed Lot 4, with expected completion for summer 2027, features approximately 3.87 acres of flat, buildable land at the entrance of IMIP off Sugarloaf Road with Trans Canada Highway exposure. City services will include water and sewer. Hydro and Natural gas available at lot line. Message us for additional information. (id:6769)

Brendan Shaw

Brendan Shaw Real Estate Ltd.

Phone: (250) 319-4737

<http://www.bsre.ca/>



RE/MAX Kelowna
100-1553 Harvey Avenue
Kelowna, BC,
Canada