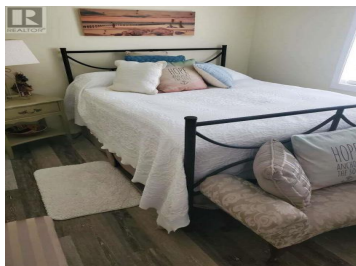
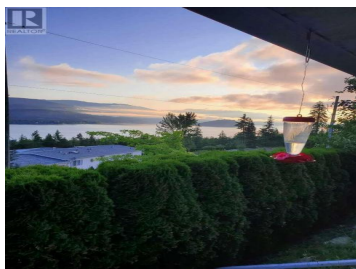




1510 Trans Canada Highway 32 Sorrento British Columbia

Sorrento

\$459,900



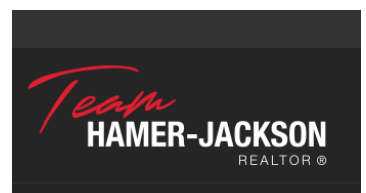
For more information click the brochure button below. Stunning Large Moduline Home with Panoramic Lake Views! Discover the perfect blend of luxury, comfort, and breathtaking natural scenery in this spacious 1,512 sq. ft. Moduline home, nestled in a private 55+ park in the serene Sorrento/Blind Bay area. Located at Unit 32 - 1510 Trans Canada Highway, this home offers a peaceful setting with a monthly pad fee of \$485 Step inside to find 2 large bedrooms and 2 bathrooms, including a luxurious 5ft walk-in shower. The primary bedroom features a walk-in closet and an ensuite bath with a skylight, bringing in an abundance of natural light. A separate family room/office provides the perfect space for work or relaxation. The elegant interior boasts rounded corners, crown moldings, and a drywalled finish for a modern and polished look. Stay cozy year-round with a gas fireplace, furnace, and air conditioning, while the stainless steel appliances (including a gas stove) add a touch of sophistication to the kitchen. Additional upgrades include a new electric water heater (2018) and a new roof (2018) for peace of mind. Vinyl plank flooring runs throughout the home, complemented by unique feature walls that add warmth and character. Enjoy panoramic lake views from the spacious covered deck with glass railings, the perfect spot to relax and entertain. The home also includes a double garage...

Darya Pfund

Easy List Realty

Phone: (888) 323-1998

<http://www.easylistrealty.ca/>





RE/MAX Kelowna
100-1553 Harvey Avenue
Kelowna, BC,
Canada