

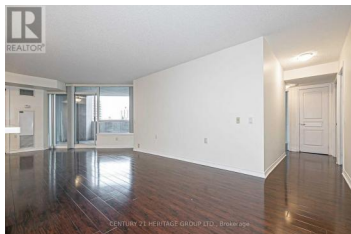
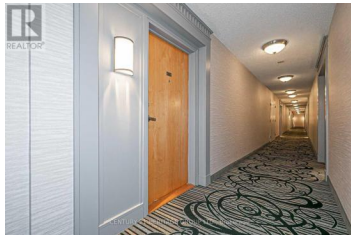


9017 Leslie Street 322 Richmond Hill Beaver Creek Business Park Ontario

Beaver Creek Business Park

\$3,550

CENTURY 21 HERITAGE GROUP LTD., Brokerage



Amazing Location!!! Fabulous Unit with approx. 1550+208 Sqft , Third Level, Unobstructed Gorgeous View Of South & South West, Double Entry!!! Huge Kitchen W/Large Breakfast Bar, Top Of The Line S/S Appliances. Open Concept Layout With High Ceilings. Three bedroom with perfect size den. It Comes With 3 Parking Spaces!!!!. Close To Hwy 404 & Hwy 407, Steps To Highway 7, Exclusive Membership To Luxurious 25000sqft Sheraton Parkway Hotel Athlete Club: Indoor/Outdoor Pools, Squash, Basketball & Etc. Extras: Laminate Floor, Fridge, Stove, Microwave, Dishwasher, Washer & Dryer. Two Entrances (3rd Bedroom Has Separate Entrance & Bath, potential use As a Home Office/Nanny Quarters/In-Law Suites). (id:6769)

ARMIN ESMAILPOUR HESARI

CENTURY 21 HERITAGE GROUP LTD.

Phone: (905) 764-7111



RE/MAX Kelowna
100-1553 Harvey Avenue
Kelowna, BC,
Canada