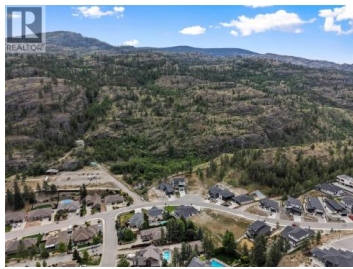
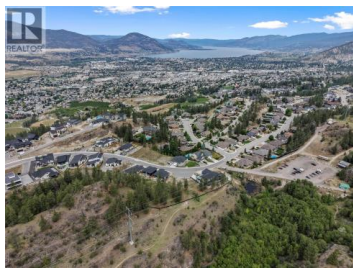
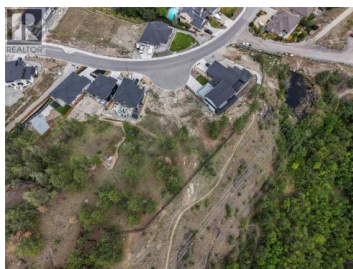
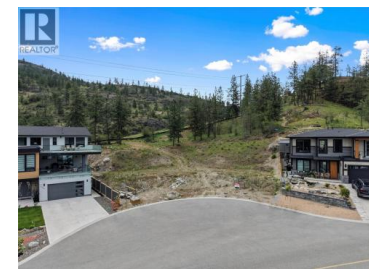




3224 Evergreen Drive Penticton British Columbia

Wiltse/Valleyview

\$239,900



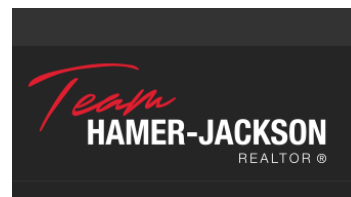
An exceptional opportunity to build your dream home in one of Penticton's most sought after communities. This expansive 13,000 sq ft lot, located at the top of Evergreen Drive in the prestigious Bluff subdivision, offers the perfect setting for a stunning two storey walk up design with a garage and generous backyard space. Surrounded by natural beauty and upscale homes, this property combines privacy, views, and convenience in one of the city's premier neighbourhoods. Just minutes from downtown, residents enjoy easy access to local restaurants, wineries, shops, schools, and the vibrant lakeside lifestyle that makes Penticton such a desirable place to call home. Known for its endless outdoor recreation, strong sense of community, and relaxed Okanagan living, Penticton offers the perfect balance between adventure and everyday comfort. With hiking and biking trails practically at your doorstep and world class beaches, golf, and skiing all nearby, this location is ideal for professionals, families, and anyone looking to embrace the Okanagan lifestyle. (id:6769)

Chris Sereda

Real Broker B.C. Ltd

Phone: (250) 575-4804

<http://www.kelownahomes.com/>



RE/MAX Kelowna
100-1553 Harvey Avenue
Kelowna, BC,
Canada