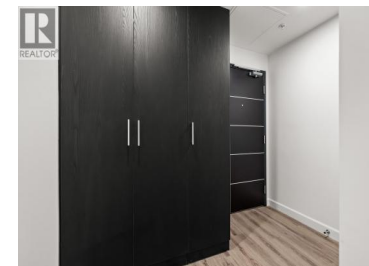




630 Boynton Place 325 Kelowna British Columbia

Glenmore

\$599,900



IMPROVED PRICING ON EVERY HOME. SAVINGS UP TO \$160,000. Brand New. Move-In Ready. Welcome to Eminence at Knox Mountain. This 2-bed, 2-bath home offers approx. 952 sqft of smart, sophisticated living designed for people who appreciate clean lines & thoughtful details. Inside, 9-ft ceilings & expansive windows create a bright, open feel. The kitchen is a standout with premium 2-tone cabinetry, quartz countertops, stainless steel appliances, a gas range & a unique wine storage feature. Designer LED lighting, a statement entry door, & custom shelving & closet solutions complete the polished finish. Parking included with your own private bike cage. The building's common rooftop viewing terrace gives all new meaning to Kelowna's Patio Season. Pet-friendly & Nature at your doorstep with direct access to Knox Mountain's hiking & biking trails. Downtown Kelowna & Glenmore are minutes away. Buy new & save. Eligible buyers may qualify for the Property Transfer Tax exemption & 1st time home buyer GST exemption. Move-In Ready 1-Bed to 2-Bed + Den homes available. Sales Centre open Sat & Sun 12-4pm or by appointment. Photos & virtual tour may be of a similar home. (id:6769)

Darcy Nyrose

RE/MAX Kelowna

Phone: (250) 575-1946

<http://www.kelownarealestatepros.com/>



RE/MAX Kelowna
 100-1553 Harvey Avenue
 Kelowna, BC,
 Canada

