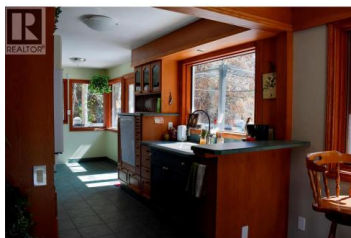




## 326 Adamson Drive Penticton British Columbia

Wiltse/Valleyview

# \$745,000



Welcome to this well loved rancher offering versatility, comfort, and an excellent investment opportunity. Situated in a highly desirable, central location at the end of a quiet cul-de-sac, this home provides both privacy and convenience—close to shopping, schools, and everyday amenities. The main level features three spacious bedrooms and a full bathroom, with a bright and inviting layout enhanced by an abundance of natural light. South-facing Triple E windows flood the living spaces with sunshine, creating a warm and energy-efficient environment throughout the day. Downstairs, a self-contained one-bedroom walk-out in-law suite offers excellent flexibility—ideal for extended family or rental income. A great tenant is already in place, making this a turnkey investment opportunity for buyers looking to offset their mortgage or expand their portfolio. With plenty of windows throughout the home, you'll enjoy a bright, airy atmosphere on both levels. The property's location at the end of a cul-de-sac adds to the appeal, offering a peaceful setting with minimal traffic—perfect for families or those seeking a quiet retreat. Whether you're looking for a comfortable family home, multi-generational living, or an income-generating property, this home checks all the boxes. Gas hot water tank was replaced in February 2026. Buyers to verify measurements if important. (id:6769)



**RE/MAX Kelowna**  
100-1553 Harvey Avenue  
Kelowna, BC,  
Canada

### Bronwyn Booth

RE/MAX Wine Capital Realty

Phone: (250) 462-7103

<https://bronwynbooth.winecapitalrealty.com/>

