



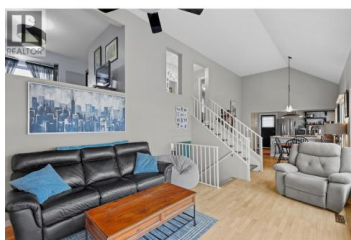
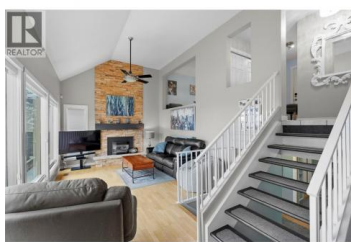
328 WHITESHIELD Crescent Kamloops British Columbia

Sahali

\$699,900



Wonderful 3 bdrm home + den and rec room. Dining/living room has 17' ceilings + incredible mountain views from full length windows! Fenced yard, private patio, 2 peaceful decks and 2 sheds. Lower level has 1 bedroom, versatile space perfect for an office, games room or cozy den + utility room/work shop. Yard backs onto a quiet creek and walking trails. Full bathroom, large laundry room and bedroom on 3rd level. Spacious primary bedroom with ensuite. Updated Furnace and hot water tank. Perfect location in quiet culdesac in Sahali close to shopping, TRU, schools, Peterson Creek park, easy access to transit. Plenty of parking. (id:6769)



Jessica Gunnlaugson

RE/MAX Real Estate (Kamloops)

Phone: (250) 572-2925

<https://kamloopsforsalehomes.com/>



RE/MAX Kelowna
100-1553 Harvey Avenue
Kelowna, BC,
Canada