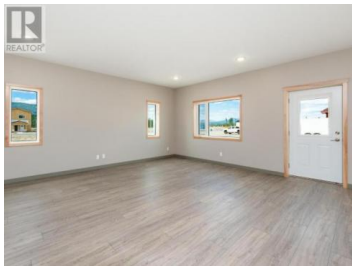




**Whitehorse Yukon**

**\$642,370**



Valley lot available in Copper Ridge with choice of SPK Homes floorplan: Bungalow, 2 Storey, or Up/Down Duplex! Lot 15 is 6727 sqft and has a SW facing backyard. Bungalow priced here. 2 Storey \$692,370. Up/Down Duplex \$712,370 Bungalow: 1 level, 1560 sqft. 3 bed and 2 full bath. Primary bed has walk-in closet and 5pc ensuite. There are also 2 more bedrooms, a 4pc common bath, and laundry room 2 Storey: 2016 sqft and 2 levels with 2 living areas and all 3 bedrooms upstairs. Primary has walk-in closet and ensuite. 4pc common bath and a laundry room also upstairs. 1/2 bath on the main level Up/down duplex: Unit A: 2 bed/2 bath, 1176 sqft. Unit B: 2 bed/2 bath, 834 sqft. Separate laundry, crawlspaces, decks, and HRV for each. All: Open concept living, and dining, and kitchen w/ island, pantry, and 3 year warranty appliances. Soft close cabinets, vinyl plank floor, 9' ceilings, and metal roof. Large entry for crawlspace, 8ft deck spans the length of home, and double concrete parking pad (id:6769)

**Sabrina Sabourin**

RE/MAX ACTION REALTY

Phone: (306) 737-7032



**RE/MAX Kelowna**  
 100-1553 Harvey Avenue  
 Kelowna, BC,  
 Canada