



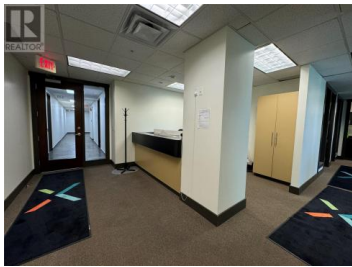
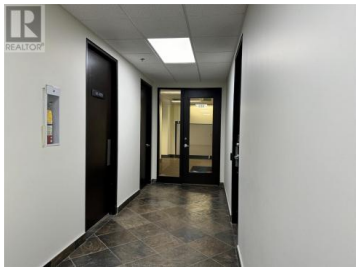
1620 Dickson Avenue 330 Kelowna British Columbia

Springfield/Spall

\$18



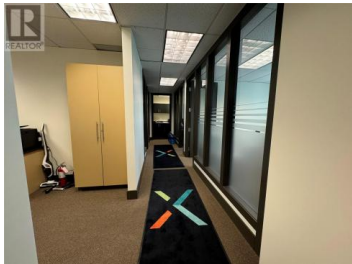
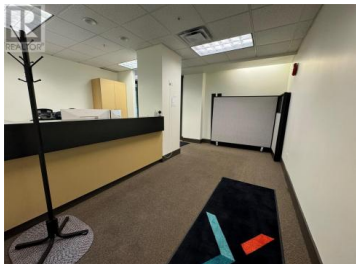
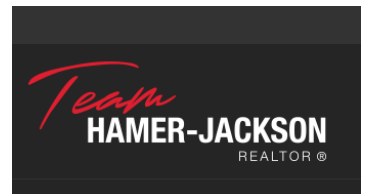
Opportunity to sublease 1,336 SF in the highly regarded Landmark District, a vibrant community of professionals. This unit includes four private offices, a large reception area, and a small kitchenette, all updated and ready for use. The sublease runs through July 31, 2028, with the potential for a new Head Lease if a longer term is desired. The Landmark District provides plenty of on-site parking and easy access to shopping, restaurants, and seasonal events. Enjoy the winter charm of the Tree of Hope Walkway and the lively Kelowna Farmers' Markets on Wednesdays and Saturdays during the summer. Let's Chat! (id:6769)



Courtney Fedevich

Venture Realty Corp.

Phone: (250) 575-3522



RE/MAX Kelowna
100-1553 Harvey Avenue
Kelowna, BC,
Canada