

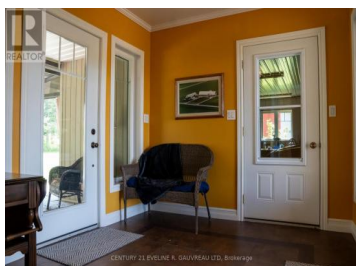


**331475 Highway 11 Armstrong Ontario**

**\$749,000**

CENTURY 21 EVELINE R. GAUVREAU LTD. Brokerage

TCTDAR



Exquisite home and property just outside Earleton! This 2008 custom-built bungalow boasts high-end finishes throughout its 3 bedrooms, 2.5 bathrooms, complete with an attached 2-car garage and a detached 28' x 38' shop, all set on 10 acres. Upon entry, you are greeted by a spacious breeze-way connecting to a covered patio and the garage. The interior features a welcoming foyer with a 2-piece powder room, a convenient laundry room with additional oven and fridge, ideal for large gatherings. The expansive kitchen offers built-in appliances, a generous island, and adjoining dining space, flowing seamlessly into the open-concept dining area and living room with patio access to the backyard. The primary bedroom includes a walk-in closet and a luxurious 3-piece ensuite, complemented by two additional bedrooms and another well-appointed 3-piece bathroom down the hall. Outside, the property boasts a substantial driveway, meticulously landscaped grounds, secondary driveway to the rear yard, and more. This exceptional home warrants a personal viewing to fully appreciate its charm. (id:6769)

**Jaime Roach**

CENTURY 21 EVELINE R. GAUVREAU LTD

Phone: (705) 650-3306



**RE/MAX Kelowna**  
100-1553 Harvey Avenue  
Kelowna, BC,  
Canada