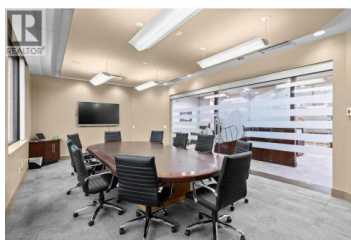
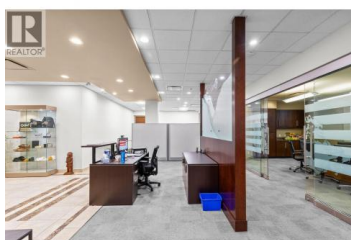
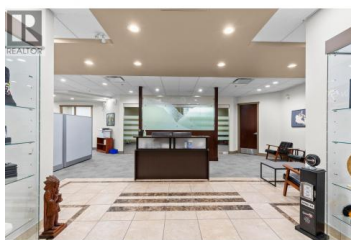


## 1060 Manhattan Drive 340 Kelowna British Columbia

Kelowna North

# \$16



Fully improved office space for sublease in the North End of Downtown Kelowna. Beautiful 3rd floor unit of approx. 3591 SF with 7 individual offices includes manager's office, boardroom, reception area, file room/storage, server room, kitchenette and nearby shared washrooms. Up to 7 reserved, heated & secure underground parking stalls all at a monthly market rate. Located in the Manhattan, a premiere, Class A architecturally striking office building in part of a rapidly growing part of Kelowna. Building amenities include roof top patio, showers and lockers, and building is fully secured including card lock access. This is an outstanding opportunity, sublease term ends April 30, 2027 with possibility of a longer term (negotiated with landlord). Discover an excellent opportunity to lease 3591 square feet of fully finished, second-floor Class "A" office space in Kelowna's North End, downtown. Unit features ample natural light, quality finishes, kitchenette, open work space, enclosed offices, and multiple boardrooms. The Manhattan offers a modern workspace with a range of amenities designed to enhance tenant satisfaction. These include secure, heated underground parking, a rooftop deck, on-site showers, and lockers. This lease opportunity offers an exceptional chance to secure high-end office space in a prime Kelowna location with unmatched accessibility (id:6769)



**RE/MAX Kelowna**  
100-1553 Harvey Avenue  
Kelowna, BC,  
Canada

### Steven Harvey

Business Finders Canada

Phone: (250) 808-2838

<http://www.businessfinderscanada.com/>

