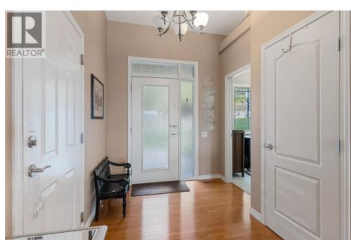
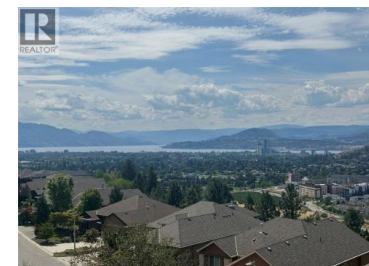




## 663 Denali Court 345 Kelowna British Columbia

Dilworth Mountain

**\$998,800**



A magnificent townhome without compromise - this exceptional Denali Ridge residence offers awe-inspiring views and a functional layout designed for modern living. From the moment you walk in, you'll be captivated by the expansive panoramic views of the lake, valley, and natural surroundings. Step inside and discover a bright, beautifully appointed home with vaulted ceilings, hardwood floors, and oversized picture windows that flood the space with natural light. The thoughtfully designed floorplan creates seamless spaces to live, work, and play, including a fully finished daylight walkout basement perfect for a media room, guest suite, or home office. Enjoy a modern kitchen that's both functional and stylish. Step outside to your oversized balcony with glass railings--your favorite spot for morning coffee, evening wine, and entertaining almost nine months a year. Unbeatable location on prestigious Dilworth Mountain and quiet location within the community with nature across from you - just minutes from everything. This home offers the perfect balance of luxury, comfort, and nature for the whole family! (id:6769)



**Scott Mayne**

RE/MAX Kelowna

Phone: (250) 469-4001

<http://www.pwrg.ca/>



**RE/MAX Kelowna**  
100-1553 Harvey Avenue  
Kelowna, BC,  
Canada

