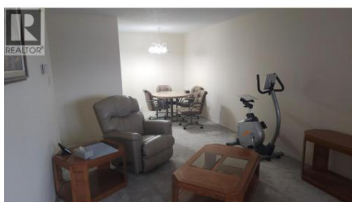


**1560 Summit Drive 348 Kamloops British Columbia**

Sahali

**\$279,900**



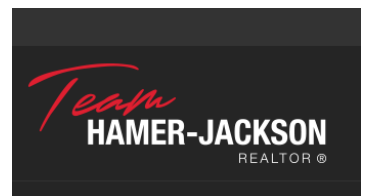
Very clean and updated 2 bedroom unit in this well-managed and well-kept complex. This building has received plenty of recent upgrades including Hardi-plank siding, newer windows and doors, and the neighborhood has received sidewalk widening, lighting, and a pedestrian-controlled crosswalk to enhance safety and walkability. Close to all services including shopping, recreation, transit, TRU and more. Vacant, quick possession is available. An excellent starter home, downsize or investment property. All measurements and strata fees are approximate pending availability of strata docs. (id:6769)

**Ken McClelland**

RE/MAX Kamloops

Phone: (250) 371-1499

<http://www.keninkamloops.com/>



**RE/MAX Kelowna**  
100-1553 Harvey Avenue  
Kelowna, BC,  
Canada