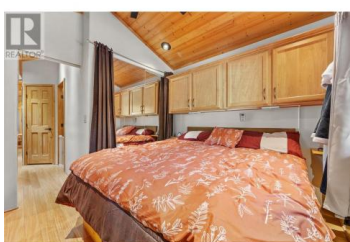


4835 Paradise Valley Drive 35 Peachland British Columbia

Peachland

\$287,500



Welcome to Paradise Valley Living - Your Okanagan Escape! 35-4835 Paradise Valley Drive, Peachland BC Discover the perfect blend of modern comfort and rustic charm in this meticulously maintained 2-bedroom, 1-bathroom cottage retreat, just 10 minutes to Peachland & West Kelowna, and only 30 minutes to downtown Kelowna. This spacious park model home boasts 663 sq ft of indoor living space, making it the largest unit in Paradise Valley. Thoughtfully designed for full-time living or a luxurious weekend getaway, this home features high-end finishes throughout, including beautiful countertops, gas stove, gas furnace, central air conditioning and laundry. The enclosed sunroom and walkout covered deck offer the best of indoor/outdoor living - perfect for entertaining or simply relaxing in nature with your morning coffee or evening BBQ. Additional highlights include: Spacious open-concept layout. Large outdoor deck area. Storage shed for all your gear. Pet-friendly and long-term rentals allowed. Quiet forested surroundings, ideal for hiking, exploring, and reconnecting with nature. Whether you're looking for an affordable year-round home, a vacation property, or an investment rental, this is a rare opportunity to own in one of the Okanagan's most serene and sought-after communities. Truly the most living for less in the Okanagan - don't miss out on this hidden gem! (id:6769)



RE/MAX Kelowna
100-1553 Harvey Avenue
Kelowna, BC,
Canada

Ann Stanley

RE/MAX Kelowna

Phone: (250) 317-8171

<http://www.annstanley.com/>

