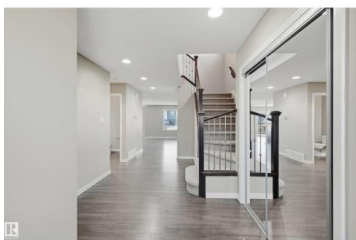




Edmonton Alberta

Chappelle Area

\$699,800



A rare opportunity for multi-family investors! Built by Bedrock Homes with legal suites, catering to 2 families each or multi-generational/versatile living arrangements. Double att'd garages +add'l double parking pad with back lane access. Approx 3300sf of total living space. 3 living areas, 5 bedrooms, 4 bathrooms, 2 full kitchens, 2 sets of laundry & separate entrance. Great room highlights a modern feature wall with linear gas fireplace & overlooking a spacious kitchen highlighting BRAND NEW REFINISHED CABINETS with plenty of storage & prep space. Dining nook provides direct access to deck for evening bbqs & landscaped yard. Upper level features a bonus room for family movie nights. Oversized primary bedroom complete with 5pc ensuite & walk in closet. 2 additional bedrooms & 4pc bathroom for a large family. Lower level separate entrance leads to a private 2 bedroom legal suite. Very well maintained home. Immediate possession available. (*some staged photos) (id:6769)

Alan H. Gee

RE/MAX Elite

Phone: (780) 498-2187

<http://www.alangee.com/>



RE/MAX Kelowna
100-1553 Harvey Avenue
Kelowna, BC,
Canada