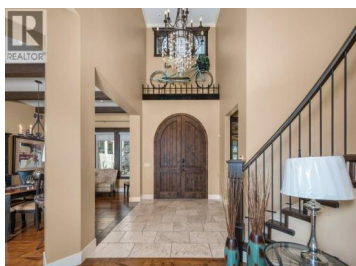
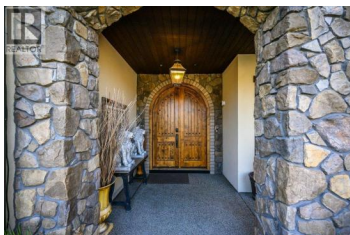




354 Quilchena Drive Kelowna British Columbia

Kettle Valley

\$3,098,000



Perched to capture sweeping lake, city, and mountain views, this exceptional lakeview estate offers over 7,700 sq.ft. of refined living across three thoughtfully designed levels. Designed for comfort and entertaining, the home blends timeless architecture with premium finishes and seamless indoor-outdoor flow. The main and upper levels span approximately 4,600 sq.ft., featuring open-concept living spaces positioned to maximize the views. The chef's kitchen anchors the home with an 8-burner gas range, double ovens, double-wide refrigerator, walk-in pantry, expansive counter space, and under-cabinet lighting, all overlooking the lake. The primary suite is a private retreat with heated tile floors, a spa-inspired ensuite with soaker tub and glass shower, and a custom dressing room with lake views. Each of the five additional bedrooms includes its own ensuite, offering comfort and privacy. The 3,100 sq.ft. walkout basement features heated concrete floors, a wine room, gym, recreation spaces, and a suspended-slab media room. Outdoors, enjoy a saltwater in-ground pool, hot tub, and multiple decks and patios. Comfort and functionality are integrated throughout with dual furnaces, a new Navien hot water tank, dual laundry rooms, powered blinds, built-in sound system, infrared sauna, and a triple heated garage, with potential for a nanny or in-law suite. A rare opportunity to experie...



RE/MAX Kelowna
100-1553 Harvey Avenue
Kelowna, BC,
Canada

Don Kassa

RE/MAX Vernon

Phone: (250) 549-4161

<http://www.donkassa.com/>

