

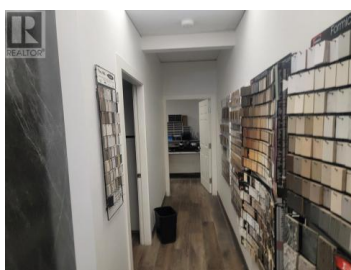
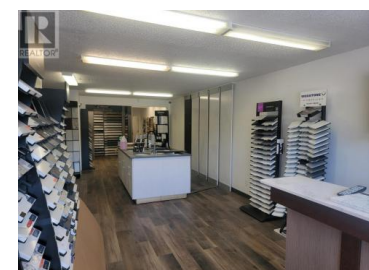


3566 MASSEY Drive Prince George British Columbia

\$17



High Exposure building in a great location. Centrally located retail/warehouse with 16ft overhead door in front and back to common loading dock. 18 ft ceilings in warehouse. The unit is 3872 square feet including the showroom, offices, lunch area and warehouse. Join the successful businesses such as Nedco, Interstate Batteries, and Adriana's Deli in this well-maintained industrial strip mall. * PREC - Personal Real Estate Corporation (id:6769)

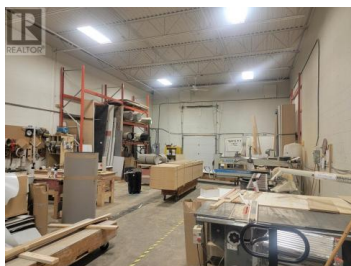
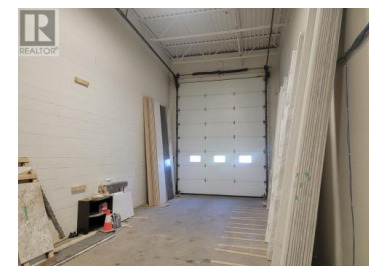
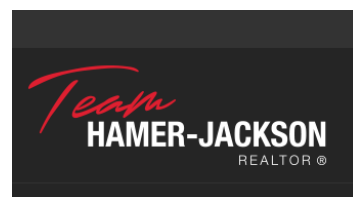


Clint Dahl

Royal LePage Aspire Realty

Phone: (250) 981-2070

<http://www.clintdahl.ca/>



RE/MAX Kelowna
100-1553 Harvey Avenue
Kelowna, BC,
Canada