

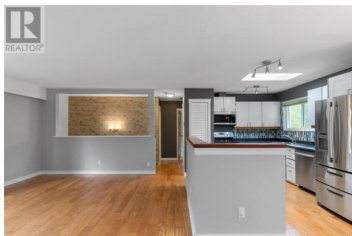


3622 Apsley Avenue Nanaimo British Columbia

Uplands

\$675,000

MLS#960707



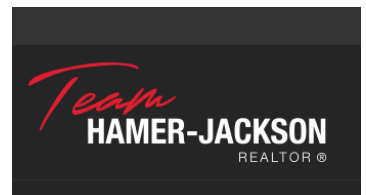
Discover comfort and convenience in this charming home located close to Long Lake and convenient shopping. The home features an open-concept layout with hardwood flooring and an updated kitchen with stainless steel appliances and pantry closet. Enjoy two bedrooms on the main floor alongside a four piece bathroom. Step outside to a spacious back deck, with access to the large level fenced yard. The lower level offers additional living space with a family room, bedroom, laundry, and three-piece bathroom. The heat pump provides both cooling and heating for the home. A single garage and wide driveway that extends to the backyard provides plenty of parking including space for an RV or boat. For more info on this property see the full list of upgrades, floor plan, video and 3D tour. All data and measurements are approximate and must be verified if fundamental. (id:6769)

Vicky Needham

RE/MAX of Nanaimo

Phone: (250) 751-1223

<http://www.millerrealestate.com/>



RE/MAX Kelowna
100-1553 Harvey Avenue
Kelowna, BC,
Canada