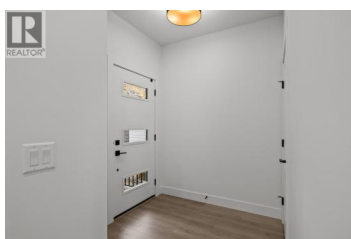
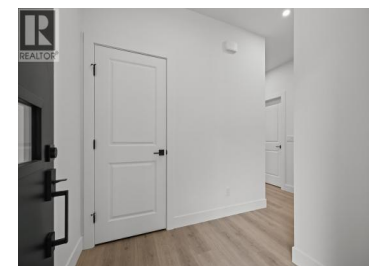
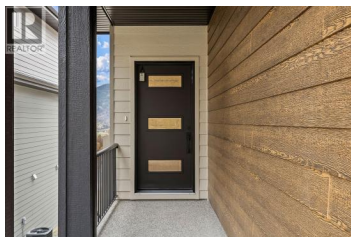
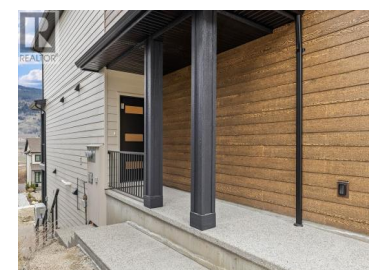




365 Arrowleaf Rise Coldstream British Columbia

Mun of Coldstream

\$831,900



Welcome to 365 Arrowleaf Rise, a beautifully designed half duplex built by Carrington Homes in the highly sought-after Morningview community in Coldstream. Offering modern comfort, quality craftsmanship, and exceptional value, this home is ideal for buyers searching for a stylish new build in Morningview Coldstream. The bright open concept main floor is filled with natural light, creating a warm and inviting space perfect for both everyday living and entertaining. The kitchen features stylish finishes, generous cabinetry, and a functional layout that flows seamlessly into the dining and living areas. Upstairs, you'll find spacious, thoughtfully designed bedrooms, including a primary suite complete with a walk in closet and private ensuite. Additional bedrooms provide flexibility for family, guests, or a home office. Situated in a quiet, family friendly neighbourhood, this home is across the street from a park, offering added convenience and outdoor enjoyment. Enjoy low maintenance living just minutes from schools, parks, and all the amenities of Vernon, while being part of a growing and desirable community. Basement development options are available at additional cost, including the potential for a studio suite. GST is applicable. Built by Carrington Homes in Morningview Coldstream, this is an excellent opportunity for first-time buyers, downsizers, or investors looking for ...



RE/MAX Kelowna
 100-1553 Harvey Avenue
 Kelowna, BC,
 Canada

Rob Nelson

Macdonald Realty

Phone: (250) 575-4300

<http://www.kelownalife.ca/kelowna-life/rob-nelson>

