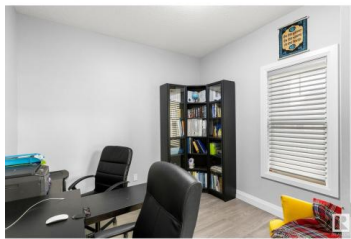
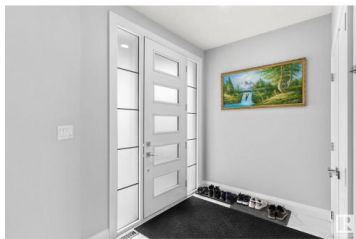




Edmonton Alberta

Chappelle Area

\$849,900



Discover the epitome of luxury living in this exquisite two-story home nestled in the heart of Chapelle. Boasting a rare heated triple car garage, this residence offers both style and functionality. The main floor welcomes you with a den and a full bath, designed with an open-concept layout centered around a stunning kitchen featuring a spacious island, perfect for culinary adventures and entertaining guests. Upstairs, unwind in the cozy bonus room or retreat to the master bedroom with its en suite, complemented by two additional washrooms for added convenience. Spanning over 2765 sq. ft., this property offers ample space for comfortable living. Furthermore, the fully finished basement with a separate entrance provides endless possibilities. With its proximity to esteemed schools and bustling shopping destinations, this residence epitomizes refined suburban living. Experience luxury living at its finest in this Chapelle gem! (id:6769)

Sunny Baraich

RE/MAX Elite

Phone: (780) 504-8319



RE/MAX Kelowna
100-1553 Harvey Avenue
Kelowna, BC,
Canada