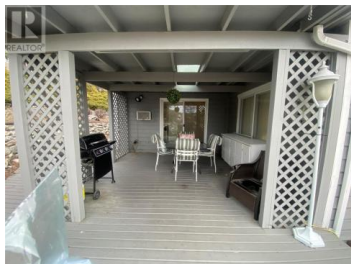
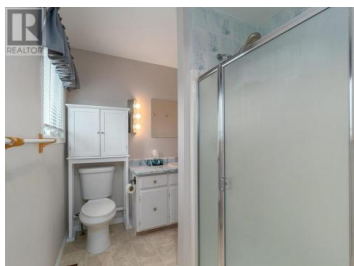




## 3745 Shaw Road Peachland British Columbia

Peachland

**\$848,800**



This PRISTINE bilevel is located in a quiet, beautiful neighbourhood in peachland overlooking 180 degree Okanagan Lake and mountains ! Main level features large windows to showcase the amazing views , formal dining room, living room with a functional gas fireplace! It's only 10 minutes to west kelowna ! Wonderful curb appeal flowing from the recently updated exterior to the private patio and gazebo. Functional home featuring 5 large bedrooms or 4 bedrooms and an office, or 4 bedroom with one bedroom suite , as well as 4 bathrooms. (id:6769)

**Linda Sunny Sun**

Laboutique Realty (Kelowna)

Phone: (250) 899-3332



RE/MAX Kelowna  
100-1553 Harvey Avenue  
Kelowna, BC,  
Canada