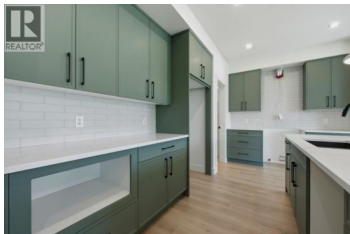
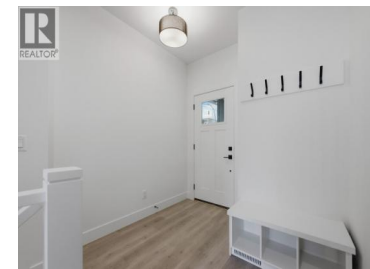




## 377 Arrowleaf Rise Coldstream British Columbia

Middleton Mountain Coldstream

# \$829,900



Experience modern living in The Aberdeen, a beautifully crafted home by Carrington Homes in Coldstream's sought-after Morningview community. This thoughtfully designed home features a bright, open-concept layout with soaring ceilings and expansive windows showcasing stunning valley views. The chef-inspired kitchen offers quartz countertops, a large island, full appliance package, and a convenient walk-through pantry connected to the double garage. Upstairs, enjoy a spacious bonus room, two generous bedrooms, and a private primary retreat with a walk-through closet, elegant ensuite, and direct access to the laundry room. The bright walkout basement features a separate entrance and future development potential. Enjoy low-maintenance living with no strata or HOA fees, close to schools, parks, beaches, Vernon amenities, and just 30 minutes to Kelowna International Airport. (id:6769)

**David Lofthaug**

Bode Platform Inc

Phone: (778) 821-2777



RE/MAX Kelowna  
100-1553 Harvey Avenue  
Kelowna, BC,  
Canada