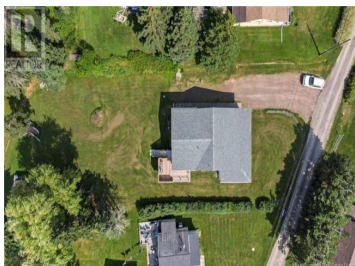




Shediac Bridge New Brunswick
\$599,900

New Brunswick Real Estate Board



Welcome to Seaside Living! This beautifully designed 2-storey waterview home is thoughtfully constructed to capture breathtaking views and flood the interior with natural light. The architecture maximizes its stunning location, featuring large, strategically placed windows on the second floor that offer panoramic views of Shediac Bay, Shediac Island, and Pointe Du Chene Wharf, ensuring a constant connection to nature. The front veranda is the perfect place to enjoy your morning coffee while taking in the tranquil waterview, amazing sunrises with the gentle sounds of seabirds, and the refreshing scent of the saltwater sea breeze. Evenings are equally enchanting on the large privacy deck, ideal for entertaining family and friends or simply enjoying the beautiful sunset in a blaze of colors over the water. The second floor boasts an open-concept design, combining the kitchen, dining, and living areas into one expansive space. This layout fosters a sense of togetherness and allows light to flow seamlessly throughout the area. The property includes 4 spacious bedrooms and 2 bathrooms, one of which features a custom shower. Additionally, there is a versatile 4 seasons sunroom/office, providing a serene space for work or leisure. This home combines modern comfort with scenic beauty, making it a truly unique and inviting property. Situated on a large lot with deeded water access, ...



RE/MAX Kelowna
 100-1553 Harvey Avenue
 Kelowna, BC,
 Canada

Janice Belliveau

RE/MAX Quality Real Estate Inc.

Phone: (506) 312-1629

<http://www.janicerealty.ca/>

