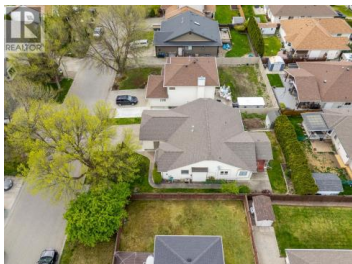




380 Murray Crescent Kelowna British Columbia

Rutland North

\$774,000



Welcome to this beautifully maintained 3-bedroom, 3-bathroom rancher with basement, perfectly positioned in a quiet, walkable, family-friendly neighbourhood in Kelowna. Thoughtfully designed for both everyday living and entertaining, this home offers the ideal blend of comfort, space, and potential. The main floor features a functional layout with the primary bedroom conveniently located on the main level, creating ease for both families and downsizers alike. The home has been meticulously cared for, reflecting true pride of ownership throughout. Step outside to a private, thoughtfully curated backyard oasis featuring an established garden, raspberry bushes, and a shed for added storage. Enjoy a truly inviting space to relax and unwind, complete with a covered deck just off the kitchen for effortless year-round indoor-outdoor living. Downstairs, the partially finished basement provides incredible flexibility, ready for your personal touch with suite potential. Additional highlights include a double garage and an extra-large driveway, offering ample parking for vehicles, toys, or guests. Ideally located close to parks, schools, amenities, the airport, golf courses, and UBCO, this home is perfectly suited for growing families or those looking to downsize without compromise. A rare opportunity to settle into a welcoming community and create your next chapter in one of Kelowna's...



RE/MAX Kelowna
 100-1553 Harvey Avenue
 Kelowna, BC,
 Canada

Jasmine Burnell

Royal LePage - Wolstencroft

Phone: (778) 997-2636

<http://www.royallepagekelowna.ca/>

