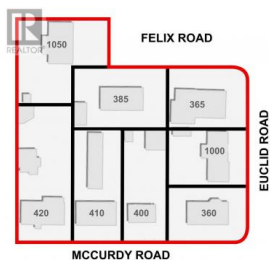




385 Felix Road Kelowna British Columbia

Rutland North

\$1,300,000



385 Felix Road is a part of an 8 Property Land Assembly. Properties included are on McCurdy/Euclid and Felix. Currently RU-4 zoning. City's OCP Plan supports Suburban Multiple Unit (S-MU) The home is a 4 bedroom 2100 square foot, 1970's built Bi-Level with a separate entrance basement makes it easy to suite. Attached garage with a work shop. (id:6769)

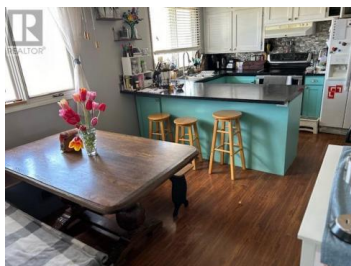
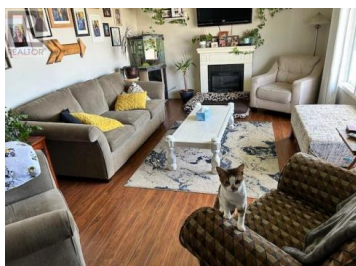


Phil Swetlikoff

RE/MAX Kelowna

Phone: (250) 470-2222

<http://www.access-kelowna.com/>



RE/MAX Kelowna
100-1553 Harvey Avenue
Kelowna, BC,
Canada