



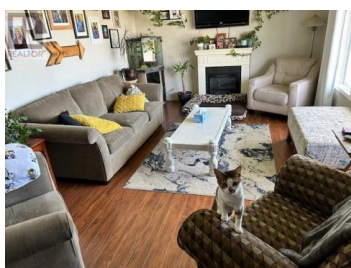
385 Felix Road Kelowna British Columbia

Rutland North

\$1,170,000



4 bedroom 2100 square foot family home on a large RU-4 zoned 11, 325 square foot lot (.26 acres) Separate basement entrance makes it easy to suite, attached garage with workshop. City OCP Plan supports Suburban Multiple Unit development (S-MU) and could be a part of a 4 lot Land Assembly. (id:6769)

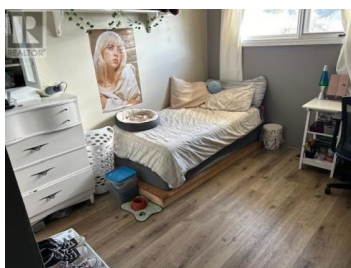
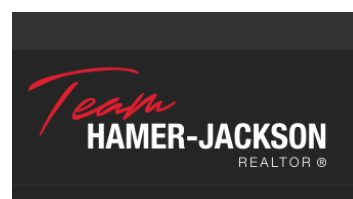


Phil Swetlikoff

RE/MAX Kelowna

Phone: (250) 470-2222

<http://www.access-kelowna.com/>



RE/MAX Kelowna
100-1553 Harvey Avenue
Kelowna, BC,
Canada