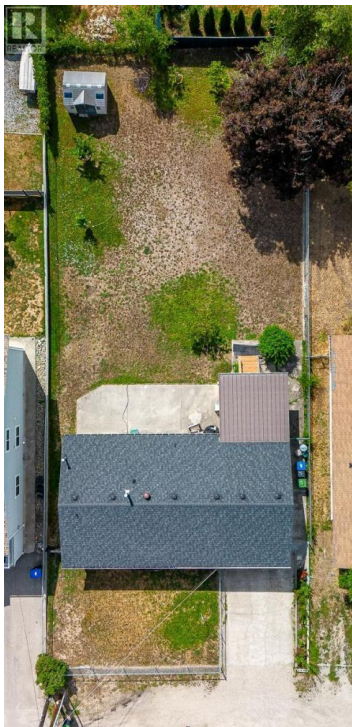




390 Asher Road Kelowna British Columbia

Rutland North

\$1,150,000



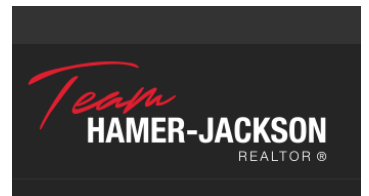
Presenting an exceptional land assembly with amazing potential to build a multifamily 6 storey building and the opportunity to do a rental-purposed build. Located within 400 meters of a major transit exchange, this site qualifies for a based FAR of 2.5 with parking exemptions, enhancing development efficiency and affordability. With favorable zoning and strong population growth, the site is ideally positioned to meet Kelowna's rising housing demand. Proximity to key amenities--including schools, shopping, parks, and UBCO this is a chance for developers and investors to capitalize on a high-density project in one of Kelowna's fastest-growing urban neighborhoods. (id:6769)

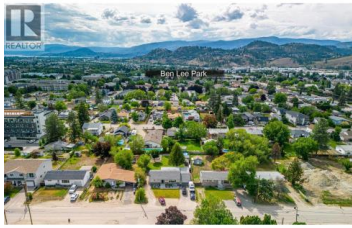
Mathieu Bedard

eXp Realty (Kelowna)

Phone: (250) 801-9700

<http://www.searchkelownaproperties.com/>





RE/MAX Kelowna
100-1553 Harvey Avenue
Kelowna, BC,
Canada