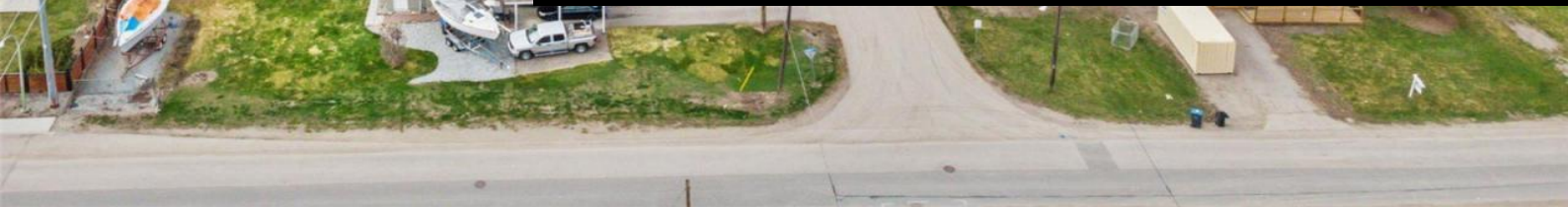




395 Edith Gay Road Kelowna British Columbia

Rutland North

\$899,000



DEVELOPMENT OPPORTUNITY. Perfect lot to develop a duplex. 114' by 76'. Future OCP zoning S-RES. Single and two dwelling residential / Secondary suites and carriage houses. Some complimentary uses are supported. Three-plex, four-plex and cottage housing may be supported in proximity to frequent transit, schools and other amenities. Home is nicely updated and well maintained. Great location next to Edith Gay Park. (id:6769)

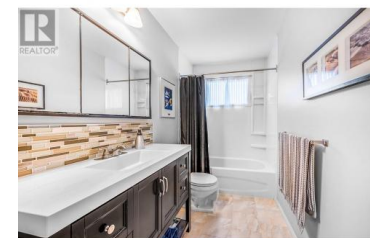
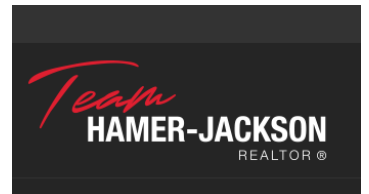


Cal Chepil

eXp Realty (Kelowna)

Phone: (250) 878-8650

<http://calchepil.ca/>



RE/MAX Kelowna
100-1553 Harvey Avenue
Kelowna, BC,
Canada