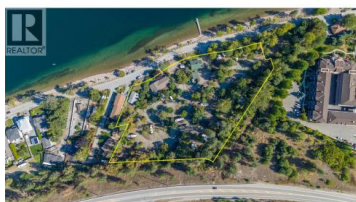




3960 Beach Avenue Peachland British Columbia

Peachland

\$12,498,000



Discover nearly four acres of prime semi-waterfront property in the heart of the Okanagan, offering a unique blend of natural beauty and multi-family development potential. This flat, 100% usable land is less than 30 minutes to Kelowna and just 5 minutes off the Coquihalla Connector, getting you to Vancouver in just 4 hours. Lined with beautiful 40-foot trees and a short stroll down Beach Avenue to the charming downtown Peachland, the property is zoned CD11, presenting exciting opportunities for multi-family redevelopment and other potential uses. Properties like this rarely become available--contact LR for more details. Duplicate listing under MLS 10382760 (Land) and MLS 10382761 (Commercial). (id:6769)

Kirk Chamberlain

Chamberlain Property Group

Phone: (250) 486-8887



RE/MAX Kelowna
100-1553 Harvey Avenue
Kelowna, BC,
Canada