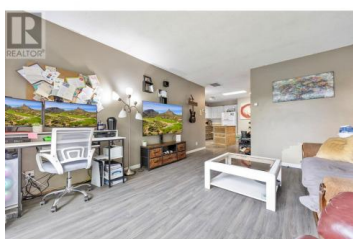
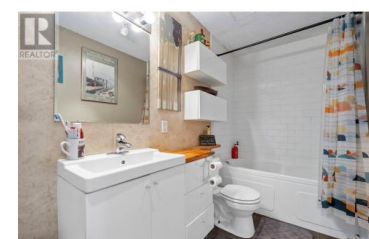


## 1333 Sutherland Ave Avenue 4 Kelowna British Columbia

Springfield/Spall

**\$324,900**



Attention first-time home buyers! This bright and spacious 634 sq. ft. one-bedroom unit offers an affordable opportunity in a prime central location—perfect for homeownership or a long-term rental investment. With NO AGE OR PET RESTRICTIONS, this property suits a wide range of buyers. Located on the quiet backside of the building, you'll enjoy peace and privacy with a lovely creek running behind the property. Despite its tranquil setting, the unit is just a short walk to all the amenities of the Capri and Landmark District, including shopping, restaurants, and transit options. The home also includes off-street parking with enough space for more than one vehicle. With low monthly strata fees of just \$200.00 and excellent potential for updates, this unit is a rare find in today's market. Don't miss out—contact your agent today to schedule a viewing! (id:6769)

**Kristan April**

RE/MAX Kelowna

Phone: (250) 870-8509



RE/MAX Kelowna  
100-1553 Harvey Avenue  
Kelowna, BC,  
Canada