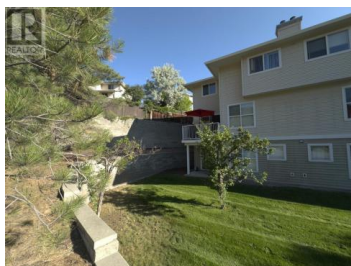




1920 HUGH ALLAN Drive 4 Kamloops British Columbia

Pineview Valley

\$499,900



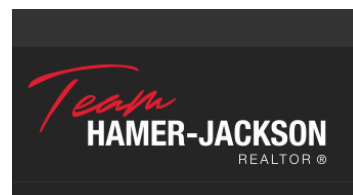
A rare corner unit, arguably the best location in a complex ! And with a recent price adjustment of 35K the seller is now offering 4-1920 Hugh Allan Drive under 500K. This home delivers privacy on three sides, a walkout basement, and stunning views of the adjacent green space. This tenant-occupied, 3-storey townhome includes 3 bedrooms and 2 bathrooms, plus an unfinished lower level with backyard access. The main floor provides level entry into the open-concept kitchen, living, and dining space, which flows onto a sun-soaked deck--ideal for relaxing or hosting. Upstairs offers three bedrooms and a full bath, while downstairs awaits your future vision. Complete with a single-car garage and an exterior stall, this home provides the function you need and the peaceful location you want. Steps from a large city-maintained park, playground, hardcourt, and walking paths--not to mention close transit service to TRU--this is a property that truly stands out. With the roof levy already fully paid, it's ready for the next chapter. (id:6769)

David Lawrence

Royal LePage Westwin Realty

Phone: (250) 374-1461

<https://www.kamloopsrealestateagent.com/>



RE/MAX Kelowna
100-1553 Harvey Avenue
Kelowna, BC,
Canada