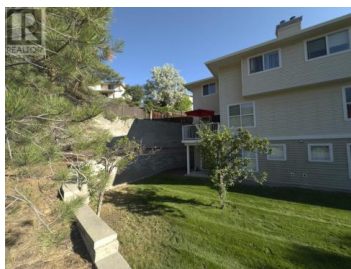




1920 HUGH ALLAN Drive 4 Kamloops British Columbia

Pineview Valley

\$534,900



Possibly the best unit within the complex welcomes you, #4 boasts privacy on 3 sides & a w/out basement. This 3-storey currently tenanted townhouse offers 3 beds and 2 baths, making it an ideal family-friendly home with an array of features that set it apart. Prime location & excellent amenities, this property is a must-see. You'll appreciate the convenience of level entry from the garage to living room, dining room, & kitchen. This well-appointed space is perfect for entertaining or enjoying quality time with loved ones. Additionally, there's a sundeck providing a serene spot for relaxation & soaking in the abundant sunshine while overlooking the hardcourt facility & playgrounds of Pineview Valley. Venturing to the lower level, you'll find direct access to the open space yard allowing you to enjoy the outdoors while overlooking the scenic wonders. The community itself offers a range of amenities including walking trails, hardcourt facilities, playgrounds, & more. (id:6769)

David Lawrence

Royal LePage Westwin Realty

Phone: (250) 374-1461

<https://www.kamloopsrealestateagent.com/>



RE/MAX Kelowna
100-1553 Harvey Avenue
Kelowna, BC,
Canada