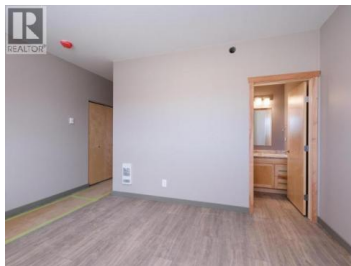




**Whitehorse Yukon**

**\$699,000**

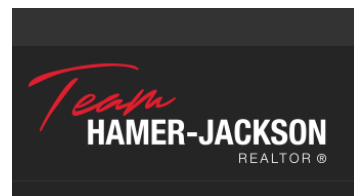


Rare opportunity - A Brand New 2 bed, 2 bath, up/down duplex by SPK Homes in Whistle Bend with income generating potential! Unit A features 2 beds/2 baths and 1176 sqft. Unit B features 2 beds/2 baths and 834 sqft. Each unit features a spacious open concept living, stainless steel appliances with upgraded 3 year warranty, walk-in pantries, top of the line finishes with birch soft close cabinets throughout, birch trim and doors, luxury vinyl plank flooring and 9' ceilings. Each unit has 2 sizeable bedrooms, a common bath and ensuite off the main bedroom. Each unit features their very own separate laundry, decks, and HRV's. The property is energy efficient, and features SPK's standard heated crawl space, vinyl siding and a metal roof. (id:6769)

**Sabrina Sabourin**

RE/MAX ACTION REALTY

Phone: (306) 737-7032



**RE/MAX Kelowna**  
100-1553 Harvey Avenue  
Kelowna, BC,  
Canada