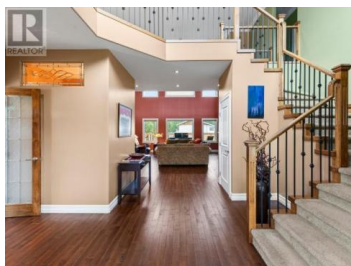
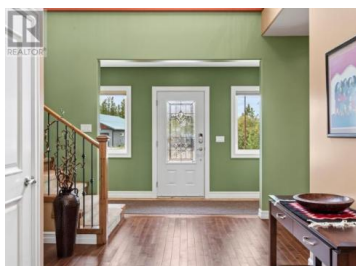




**Whitehorse Yukon**

**\$1,349,900**



Once-in-a-Lifetime Executive Home on Half Acre Lot in Porter Creek! This custom 4 bed+office, 4.5 bath showstopper offers 3,800sqft of refined living space, plus an 800sqft basement. Featuring 19-ft vaulted entrance and family room, custom walnut built-ins, granite counters throughout, custom tile flooring, and maple hardwood, every inch is designed with quality and comfort in mind. The chef's kitchen boasts double ovens, pot filler, pantry, built-in china cabinet, and seamlessly flows into the backyard retreat. The main-floor primary wing includes dual walk-in closets and a spa-like ensuite. Upstairs 2 more bedrooms feature private baths and walk-in closets. The family room and spare bedroom with own bath complete the upper floor. Additional highlights: expansive garage, HRV, radon system, central vac, security system, 12-zone irrigation system, RV parking, south facing deck, and mature landscaping with raspberry & haskap bushes. If you've been waiting for "the one", this is it. (id:6769)

**Natashia Stuckey**

eXp Realty

Phone: (867) 335-5462



**RE/MAX Kelowna**  
100-1553 Harvey Avenue  
Kelowna, BC,  
Canada