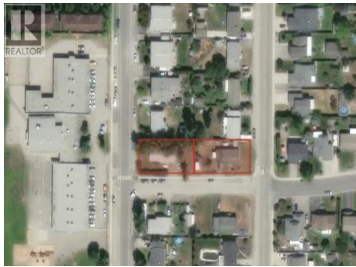




400 Milton Road Kelowna British Columbia

Rutland South

\$1,745,000



An exceptional development opportunity in the heart of Rutland! 400 & 410 Milton Road offer two side-by-side corner lots totaling approximately 18,294SF, ideally positioned adjacent to an elementary school. This redevelopment opportunity presents strong potential for a multi-family project, with a conceptual layout supporting up to 13 townhomes. Located in a highly desirable and walkable neighbourhood, the properties are within close proximity to schools, parks, shopping, and key employment hubs making it an attractive location for future residents. The City of Kelowna has indicated support for MF2 rezoning, all details and development potential are to be verified by the buyer through their own due diligence. A prime opportunity for builders and investors to secure a well located site with excellent redevelopment potential in a growing community. Renderings are conceptual and for illustrative purposes only. (id:6769)



RE/MAX Kelowna
100-1553 Harvey Avenue
Kelowna, BC,
Canada

Sasha Fallon

eXp Realty of Canada, Inc.

Phone: (672) 338-3054

<http://www.sashafallon.com/>

