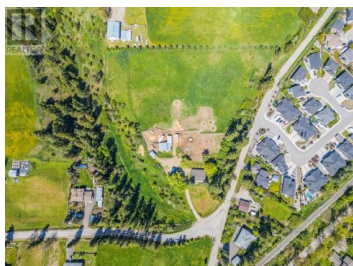


4000 Noble Road Armstrong British Columbia

Armstrong/ Spall.

\$2,500,000



Unlock the potential of this exceptional 9+ acre parcel, ideally located just inside Armstrong's city limits at the high-visibility corner of Noble Road and Fraser Road. With city services already available on Fraser Road, this property offers a rare combination of convenience, elevation, and future growth potential. Currently zoned CR (Country Residential), the new Official Community Plan designates this land as Medium Density Residential-making it a dream opportunity for developers ready to bring new housing to the community. Noble Road bisects a portion of the property and will require dedication to the City of Armstrong as part of the development process. While a portion of the land extends into a scenic ravine that will remain preserved as green space, the elevated buildable areas offer outstanding potential for thoughtfully designed residential communities. Whether you're an experienced developer or a visionary investor, this land checks all the boxes for your next big project. Opportunity like this doesn't come around often--this might just be the sign you've been waiting for. (id:6769)

Chris Holm

Real Broker B.C. Ltd

Phone: (250) 309-0039

<http://www.chrisholmrealestate.ca/>



RE/MAX Kelowna
100-1553 Harvey Avenue
Kelowna, BC,
Canada

