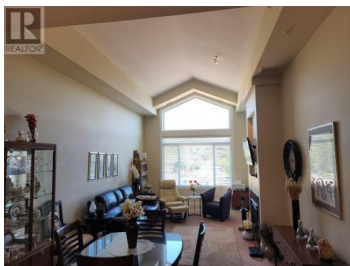


## 2532 Shoreline Drive 401 Lake Country British Columbia

Lake Country North West

**\$365,500**



Winterra in the Lakes Subdivision. Looking for a condo for investment or first time buyer? Great tenant in place would love to stay pays \$1850 mo plus utilities. Top floor unit with vaulted ceiling and gas fireplace. Central Air conditioning and forced air gas heat. 5 minutes drive to Lake Country town center, 25 mins to Vernon and 30 mins to Kelowna. This complex offers great features like fitness room, clubhouse, library and a guest suite. Clean well maintained building that is pet friendly (1 dog or 1 cat) no dangerous breeds as defined by R.D.C.O. Transit bus steps away with connections to UBCO. If you like hiking or just walking the trails this complex has both at your door step. Minutes biking to rail trail with 3 lake and beaches all close by. All shopping available in Lake Country. Airport is a 15 min drive away. You will love this place and its affordable!! (id:6769)

### Larry Hayes

Royal LePage Kelowna

Phone: (250) 212-5657

<http://www.lhayes.ca/>



RE/MAX Kelowna  
100-1553 Harvey Avenue  
Kelowna, BC,  
Canada