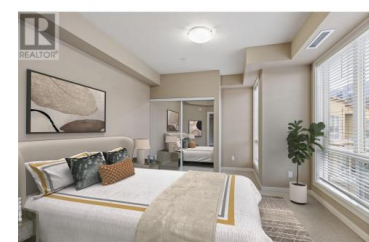




## 3550 Woodsdale Road 401 Lake Country British Columbia

Lake Country East / Oyama

**\$466,000**



Welcome to this stunning top-floor 2-bedroom, 2-bathroom unit in Emerald Point. This bright inside corner unit features newer appliances and a private deck overlooking the fantastic amenities. The building is fully geothermal, and strata fees conveniently include geothermal utilities, providing energy efficiency and year-round comfort. Emerald Point offers a resort-style experience with an outdoor pool, indoor sauna, gym, and a social room with a kitchen for larger gatherings. Located in the heart of Lake Country, you're steps from Beasley Park, complete with a soccer field, playground, picnic area, tennis courts, and a beautiful beach. Additionally, this unit is just minutes from the renowned Okanagan Rail Trail, perfect for biking, walking, and enjoying stunning lake and valley views. This vibrant community offers shopping, dining, entertainment, and hiking trails right at your doorstep, making it the perfect blend of comfort and convenience. (id:6769)

### Luke Cook

Sotheby's International Realty Canada

Phone: (250) 863-5539

<http://www.lukecook.ca/>



RE/MAX Kelowna  
100-1553 Harvey Avenue  
Kelowna, BC,  
Canada