

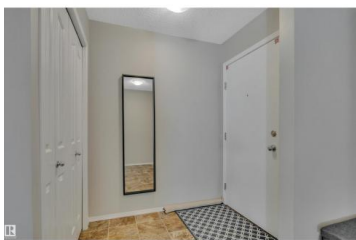
Edmonton Alberta

Rutherford (Edmonton)

\$229,900



TOP FLOOR CORNER UNIT! 2 TITLED PARKING STALLS! NEW CARPET! GREAT SHAPE! Searching for the premier 972 sq ft, 2 bed + den, 2 bath suite in the complex? This open concept unit has been well cared for and is the total package for Rutherford condo living! Open concept design w/ den at the entryway, spacious dining area, & living room for movie night or family gatherings. Two good sized bedrooms inc the primary bedroom w/ walk through closet & 4 pce ensuite. Additional 4 pce bath, in suite laundry & linen storage. Granite countertops, stainless steel appliances, newer paint, and plush carpets help this to stand out. 1 heated underground & 1 surface parking stall for parking, covered balcony with NW views. Only steps to shopping, amenities, & quick access to 41st ave & the Henday. A must see unit (id:6769)



Kevin B. Doyle

RE/MAX Elite

Phone: (780) 314-8001

<http://kevindoyle.remax.ca/>



RE/MAX Kelowna
100-1553 Harvey Avenue
Kelowna, BC,
Canada