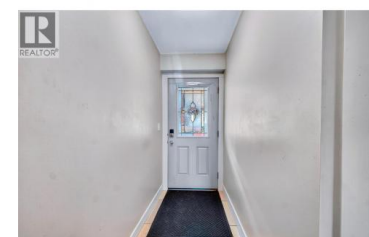
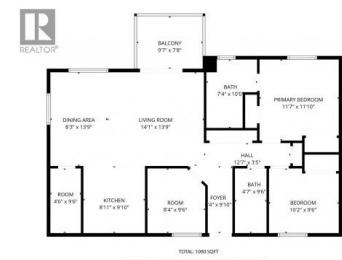


1449 1st Avenue 403 Salmon Arm British Columbia

NE Salmon Arm

\$429,900



Bright & Stylish -- Level Entry Townhome in Orchard Park Terrace! Discover comfort, convenience, and exceptional value in this corner-unit second-floor townhome. Step inside this no-stair, level entry home and enjoy a modern open concept layout featuring: 2 spacious bedrooms + a versatile den (perfect as a third bedroom, office, or hobby room), 2 full bathrooms for added convenience, a custom kitchen with stainless steel appliances, shaker style cabinetry, and plenty of storage plus a storage/utility room. Quality finishes throughout, including hardwood floors, ceramic tile, and plush carpeting. In-suite laundry. Built with ICF construction, this home offers energy efficiency and year-round comfort. As a bright corner unit, it features natural light throughout, creating a warm and welcoming atmosphere, along with a covered deck to enjoy the views. Perfectly located close to schools, shopping, parks, and other amenities, this home is an excellent choice for first-time buyers, downsizers, or investors. Assigned parking right outside your front door. Fantastic investment opportunity -- reliable tenant already in place and interested in staying. This level-entry townhome checks all the boxes. Act fast, opportunities like this don't come often! (id:6769)

Linda Clarke

RE/MAX Shuswap Realty

Phone: (250) 833-6711

<http://www.lindaclarke.ca/>



RE/MAX Kelowna
100-1553 Harvey Avenue
Kelowna, BC,
Canada

