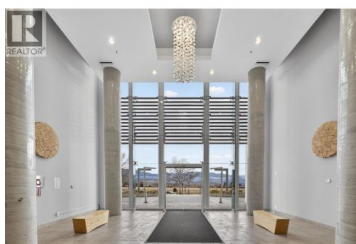


## 2040 Springfield Road 403 Kelowna British Columbia

Springfield/Spall

**\$549,000**



Welcome to INvue - an amenity-rich condo in a highly central location. This well-designed 2-bedroom, 2-bathroom home features a desirable split floor plan offering excellent privacy. The open-concept galley kitchen includes an eating bar and pantry and flows seamlessly into the dining area and living room, where unobstructed mountain views take center stage. The primary bedroom offers a full ensuite and secondary access to the main balcony, while the second bedroom enjoys its own private balcony. Abundant storage is found throughout the unit with generous closet space, complemented by a dedicated laundry room equipped with a brand new LG washer and dryer. Geothermal heating provides efficient, year-round comfort. Residents enjoy an impressive lineup of amenities, including a rooftop heated pool and lounge area, gym, sauna, dog wash station, and car wash. Located within walking distance to Orchard Park Mall, shopping, restaurants, and public transit, this condo delivers exceptional convenience, lifestyle, and views. (id:6769)

**Mark Jontz**

Royal LePage Kelowna

Phone: (250) 861-6002

<http://www.markjontz.com/>



**RE/MAX Kelowna**  
100-1553 Harvey Avenue  
Kelowna, BC,  
Canada