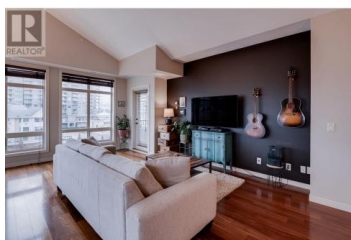
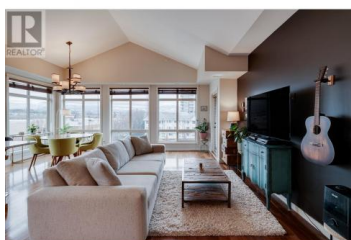




2142 Vasile Road 403 Kelowna British Columbia

Springfield/Spall

\$569,900



TOP FLOOR - This one is worth a look & shows 10/10 you will not be disappointed! Rare corner unit facing Southeast which enjoys Mountain views from the expansive windows, Vaulted ceilings & over 1100 sqft of luxury living space this unit is sure to impress! Notable Upgrades: New forced air Furnace/AC (\$15,000+), New fridge, Fresh paint, New plush carpets in the bedrooms, Custom built-in wardrobe, New high efficiency HWT. Centrally located you will not need your car often - close enough to bike to the beach's downtown or walk next door to Orchard Plaza (Save-On Foods + ample amenities). City lights & mountain views from your covered deck with gas BBQ outlet. Pets: you are allowed 1 dog or 2 cats. 1 parking stall in the underground parkade with recently enhanced Security System for parkade and Building. Stay warm & dry while taking your garbage & recycling to the parkade bins. Book your private showing today! (id:6769)

Derek Leippi

2 Percent Realty Interior Inc.

Phone: (250) 317-7881

<http://derekleippi.com/>



RE/MAX Kelowna
100-1553 Harvey Avenue
Kelowna, BC,
Canada