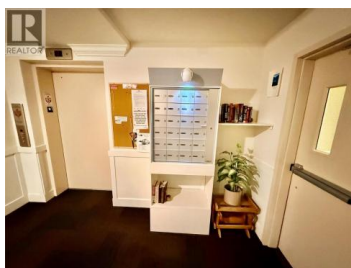




330 4 Avenue 403 Salmon Arm British Columbia

SE Salmon Arm

\$428,900



WELCOME TO IMPERIAL HEIGHTS one of Salmon Arm's most desirable 55+ strata complexes. This impressive top floor unit is quiet and move-in ready, featuring panoramic views of Mount Ida, Fly Hills, and downtown Salmon Arm - imagine watching the sunset from your deck each evening. This home checks all the boxes for convenient and secure living, with close proximity to downtown and several parks and trails. Quality finishings are featured throughout, including full height quartz countertops, hickory hardwood flooring, crown mouldings, stainless steel appliances and newer bedroom carpeting. Both the primary and second bedrooms are spacious enough for king/queen beds and have west facing mountain views. Secure underground parking with available guest and extra parking on site; the property is also fully landscaped with heated concrete sidewalk and front entrance for resident convenience and safety. Pets allowed with restrictions. ****Please click Multimedia icon under listing photos for virtual 3D tour**** (id:6769)

Stacy Cunningham

RE/MAX Shuswap Realty

Phone: (250) 253-5933

<http://stacy-cunningham.remax.ca/>



RE/MAX Kelowna
100-1553 Harvey Avenue
Kelowna, BC,
Canada