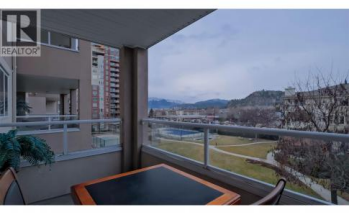
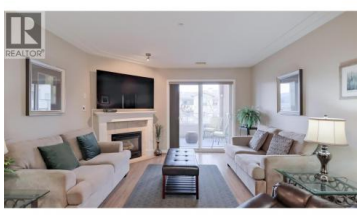


1966 Durnin Road 405 Kelowna British Columbia

Springfield/Spall

\$460,000



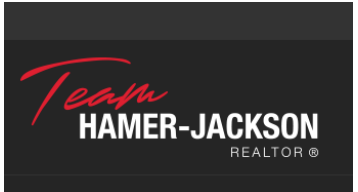
Welcome to Mission Creek Towers! This centrally located 2 bed, 2 bath condo features a spacious open-concept design, offering both comfort and convenience right at your doorstep. The living area is complete with a fireplace and flows seamlessly into a split-bedroom layout, perfect for entertaining while still providing privacy. This immaculately cared for home features central air, stainless steel appliances and a walk through double closet and ensuite in the primary bedroom. Enjoy the views of Dilworth Mountain from the large covered deck. Located just steps from Mission Creek Park and Greenway, Orchard Park Mall, Superstore, Costco and every amenity you need. Enjoy the ease of your storage locker located right across the hallway from the condo. Take advantage of the fantastic amenities at Mission Creek Towers, including an indoor pool, hot tub and bike storage room. (id:6769)

Kyle Cave

Royal LePage Kelowna

Phone: (250) 215-6464

<http://kylecave.com/>



RE/MAX Kelowna
 100-1553 Harvey Avenue
 Kelowna, BC,
 Canada