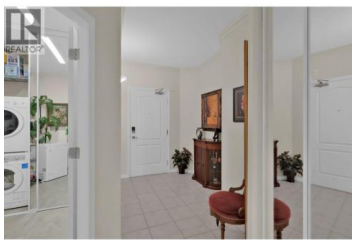
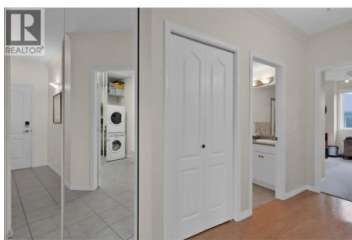
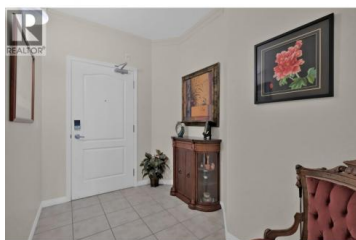




1962 Enterprise Way 407 Kelowna British Columbia

Glenmore

\$574,900



TOP FLOOR CORNER UNIT! Enjoy 1,250 sq. ft. of bright, open living space in a highly sought-after split bedroom layout. Filled with natural light from expansive windows, this home showcases real hardwood floors, mountain views, and Hunter Douglas blinds throughout—including the large covered balcony. The primary bedroom offers custom built-in closet organizers, while the second bedroom features a murphy bed, ideal for guests plus a home office. Added touches include a phantom screen door, newer A/C, updated appliances, a stand-up freezer, and gas bbq. Cozy up to the gas fireplace in winter or host summer barbecues on the balcony, with gas included in your strata fees. The storage locker is conveniently located just down the hall. Meadowbrook Estates is sought after for its resort feel. Whether you like lounging poolside in the sun or having some laughs over a game of pool with friends in the newly remodelled clubhouse, it's a perfect place to call home. Amongst the amenities are 3 guests suites with low nightly rates, bike & tire storage room and a gym. Meadowbrook is centrally located, just a stone's throw away from transit, shopping, recreation & the rail trail. (id:6769)

Kyle Cave

Royal LePage Kelowna

Phone: (250) 215-6464

<http://kylecave.com/>



RE/MAX Kelowna
100-1553 Harvey Avenue
Kelowna, BC,
Canada

