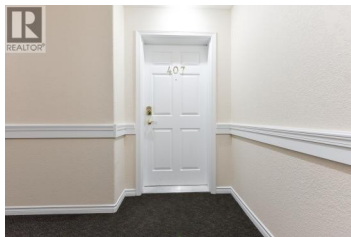
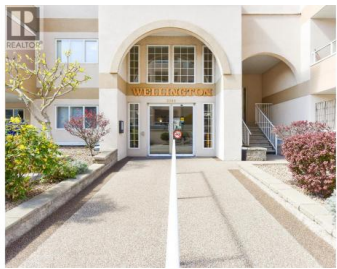




2285 Atkinson Street 407 Penticton British Columbia

Main North

\$569,900



Welcome to The Wellington in the sought after Cherry Lane Towers. This is a vibrant 55+ development situated in the perfect area of Penticton. Walk to shopping, restaurants and parks, public transit is right out front. This immaculate 2 bed two bath plus den is perched in the North West corner of the building affording you great mountain views. The spacious Primary Bedroom is complete with a walk in closet, four piece ensuite and it's own private, North facing deck, perfect for catching up on your quiet time with a great book. The well appointed kitchen is adjacent to the oversized living room and dining room. Perfect for entertaining friends and family. Access to the large West facing deck is just off the living room. Enjoy a morning coffee or an evening glass of wine in the fresh air this deck affords you. Both decks are complete with privacy screens and shutters. A spacious guest bedroom and 3 piece guest bath are situated on the other side of the suite for maximum privacy. A well appointed den offers you a craft room, media room or extra storage. Underground security parking, storage locker and a massive community room complete with exercise equipment, library, pool tables & kitchen offers you the ability to have group events with your friends and family. Cherry Lane Towers is pet friendly (with some restrictions) and offers you a great lifestyle. Call your Agent to book...

Link Snider

Royal LePage Locations West

Phone: (250) 809-9988



RE/MAX Kelowna
 100-1553 Harvey Avenue
 Kelowna, BC,
 Canada

