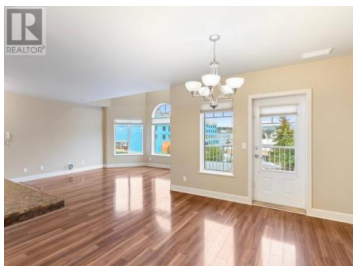
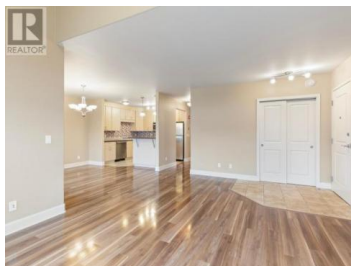
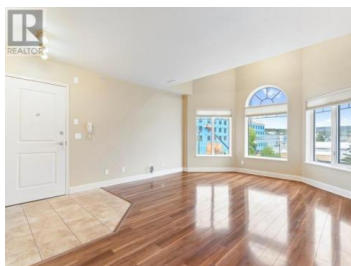




Whitehorse Yukon

\$499,900



Experience penthouse living in this top-floor condo at Parkside Place! With 1,021 sqft of bright and airy space, this 2-bedroom, 1-bath unit offers a convenient layout and direct access to nearby parks and trails. Located just steps from Main Street, you'll enjoy easy access to shops, restaurants, and everything downtown has to offer. The condo features newer flooring throughout the main living area, living room with vaulted ceilings, spacious kitchen with a breakfast bar, stainless steel appliances, and plenty of cabinet and counter space. The dining room opens to a covered patio, perfect for your morning coffee with a side of mountain views. Both bedrooms are comfortably sized. Efficient in-floor electric boiler system. Condo fees: \$450/month~building insurance, water, sewer, garbage, snow removal, maintenance, and reserve fund. Community garden space. Powered parking stall, pet-friendly. Please note, cap on rentals in the building, live-in owner is required. VIDEO TOUR (id:6769)

Graham Frey

COLDWELL BANKER REDWOOD REALTY

Phone: (867) 689-1286

<http://www.gfreyhomes.com>



RE/MAX Kelowna
100-1553 Harvey Avenue
Kelowna, BC,
Canada