



## 410 Asher Road Kelowna British Columbia

Rutland North

**\$1,399,900**

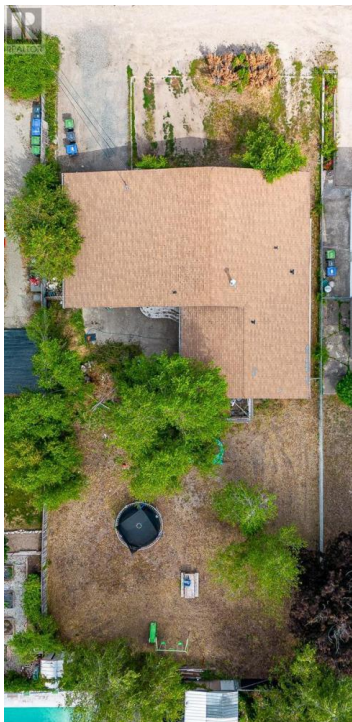
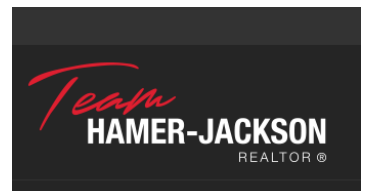
LAND ASSEMBLY OPPORTUNITY!! Developers and investors here's the opportunity to acquire this property along with four others. This assembly consists of five prime properties zoned for future development. Acquiring all five properties would provide a combined land area approximately 1.24 acres. There is the possibility of putting a residential building up to 6 storey considering all requirements are met. This property must be acquired with 390, 420, 430 and 440 Asher Road. This location is conveniently located near Rutland Sports Field, YMCA, Rutland Elementary and Secondary, transit, 10 minutes to UBCO and the Airport and 15 minutes to Downtown Kelowna. Come take a look and be a part of the early stages of development in this rapidly growing community. (id:6769)

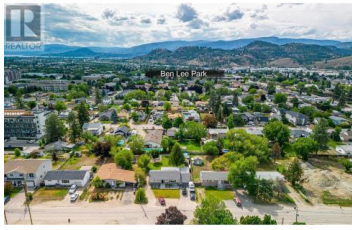
### Mathieu Bedard

eXp Realty (Kelowna)

Phone: (250) 801-9700

<http://www.searchkelownaproperties.com/>





**RE/MAX Kelowna**  
100-1553 Harvey Avenue  
Kelowna, BC,  
Canada